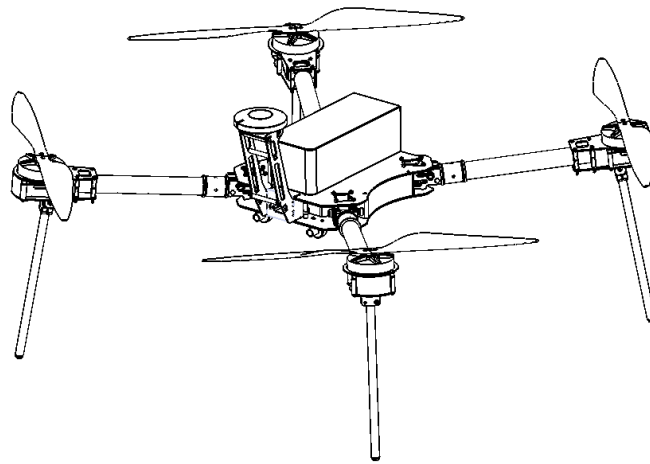


## Dronix DR750 ICD

**Ver 1.0122**



This document is the property of Dronix engineering Ltd reserves its rights document and to the data/invention/content herein described. This document, including the fact of its existence, is not to be disclosed, in whole or in part, to any other party and it shall not be duplicated, used, or copied in any form, without the express prior written permission of Dronix authorized person.

Acceptance of this document will be construed as acceptance of the foregoing conditions.



Designed for Flexibility Engineered for Endurance

---

## **Compilation and Publication Notice**

Compilation and Publication Notice This manual is covering the latest product descriptions and specifications. It is our policy to constantly improve the design and specifications. Accordingly, the details represented herein cannot be regarded as final and binding. The contents of this manual and the specifications of this product are subject to change without notice. Dronix engineering reserves the right to make changes without notice in the specifications and materials contained herein and shall not be responsible for any damages (including consequential) caused by reliance on the materials presented, including but not limited to typographical and other errors relating to the publication. For further information please contact Dronix engineering ltd.

For further information, please contact us at [info@dronix.co.il](mailto:info@dronix.co.il)



Designed for Flexibility Engineered for Endurance

---

## Table Of Contents

1. INTRODUCTION.....	4
2. Mechanical interfaces.....	4-5
3. Electrical interfaces.....	6
4. Revision Control.....	7

## 1. Introduction

This document describes the mechanical and electrical ICD and Interconnect for the Dronix DR750 platform.

## 2. Mechanical interfaces

- 2.1. To simplify the external interface to the payloads the DR750 has a double carbon tube rails with a shock-absorbing damper system.
- 2.2. the shock-absorbing system allows customers to simplify the payload integration.
- 2.3. Dronix Customized payloads plate can be integrated easily into the mechanical interface of the drone

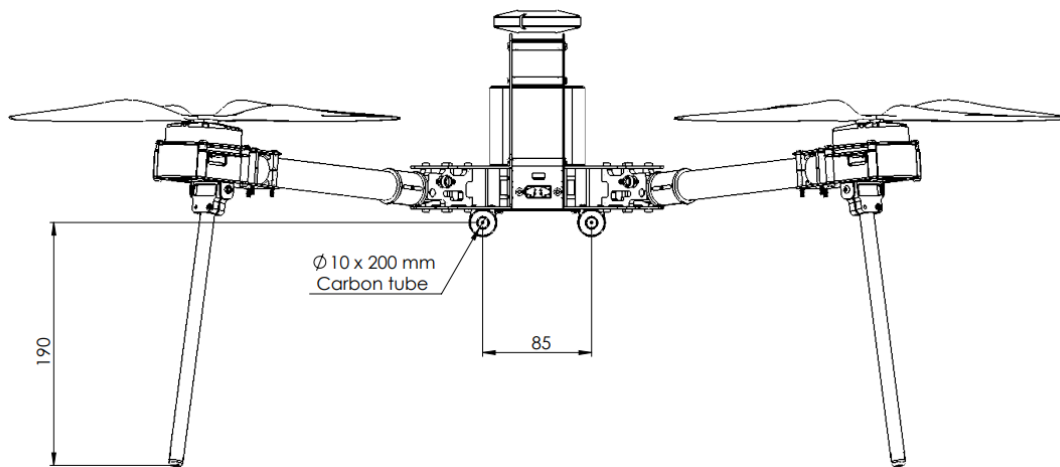


Figure 2.1: DR750 front mechanical interfaces scheme

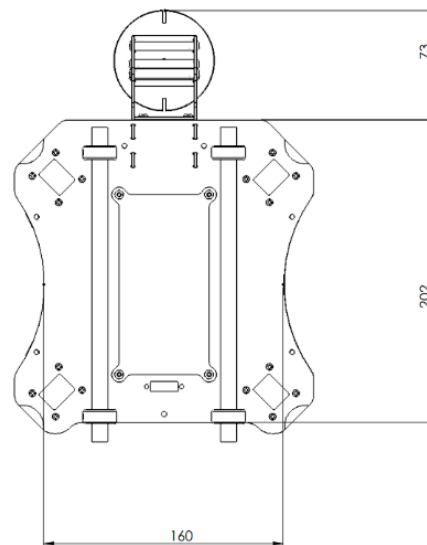


Figure 2.1: DR750 bottom mechanical interfaces scheme

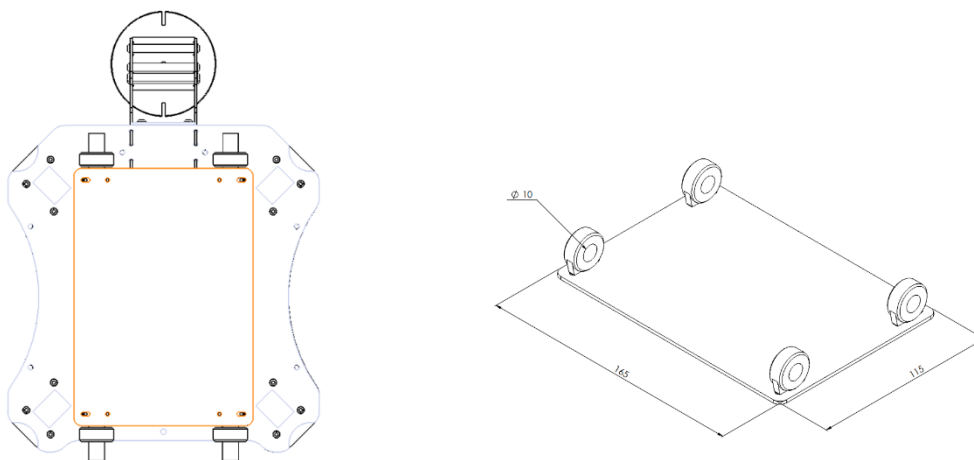


Figure 2.3: DR750 Customized payloads plate mechanical interfaces scheme

## 3. Electrical interfaces

3.1. The Dronix DR750 system has an external power and data board for 3<sup>rd</sup> party system components.

3.2. The external board is an accessory supplied by Dronix to allows customers to simplify the payload integration and quick power-up

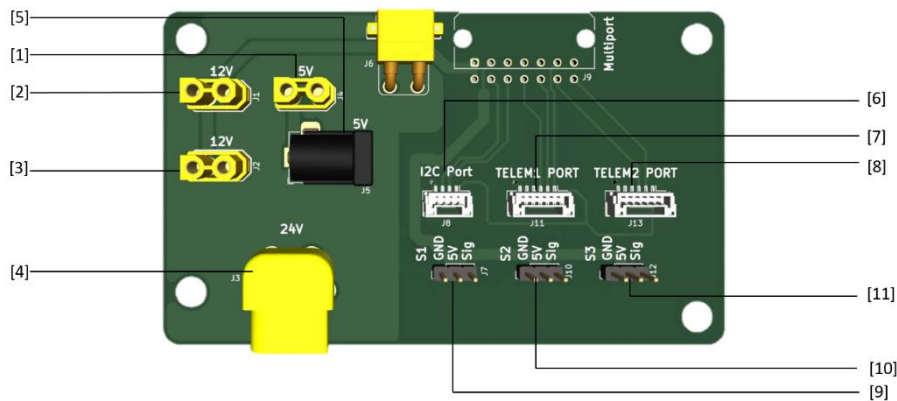


Figure 3: DR750 external power and data board interfaces scheme

Pin	Output	Type	Description
1	XT30 Female – 5V 5A	Power	Power output for camera/computer/communication/other
2	XT30 Female – 12V 5A #1	Power	Power output for camera/computer/communication/other
3	XT30 Female – 12V 5A #2	Power	Power output for camera/computer/communication/other
4	XT60 Female – 24V 3A	Power	Power output for camera/computer/communication/other
5	5.5 x 2.1 mm female DC Power Connector	Power	Power output for camera/computer/communication/other
6	I2C Port	Data	Flight controller I2C port
7	TELEM1 Port	Data	Flight controller TELEM1 port
8	TELEM2 Port	Data	Flight controller TELEM2 port
9	AUX S1	Data	Flight controller PWM port
10	AUX S2	Data	Flight controller PWM port
11	AUX S3	Data	Flight controller PWM port



**Attention – power and data connectors MUST be connected properly. Poor connections can cause system malfunction and may cause damage.**



Designed for Flexibility Engineered for Endurance

---

## Revision Control

Version	Description
1.0	Created
1.0122	External power and data board